



SOFE

Society of Financial Examiners

INSIGHT

JANUARY/FEBRUARY 2018

Volume 47 • Issue 1

SAVE THE DATE - JULY 15-18, 2018 CDS

Hyatt Regency Indian Wells, CA



You don't want to miss the opportunity to attend this year's Annual Career Development Seminar (CDS) located in a "get away" for the *Rich and Famous of the Rat Pack Era*. It offers excellent accommodations, fine restaurants, and comfortable gathering places.

SOFE CDS offers a comprehensive array of educational sessions on the latest developments and hot topics of State-based insurance solvency regulation. Additionally, attendees will benefit from the many opportunities to network with peers during the conference and at the Sunday Night Social.

The Social will be held at the exciting Indian Wells Golf Resort, which features a magnificent 53,000 square-foot clubhouse, a sumptuous buffet and special activities. You will enjoy amazing views, fantastic food and games for those who "shoot par" and those who have never held a golf club.

- ✔ Putting Course • Closest to the pin competition
- ✔ Hole in one contest • Practice up as it is rumored to be a \$1M prize
- ✔ SNAG (*Starting New At Golf*), Tic Tac Toe, Bocce ball
- ✔ Duck Pond Putting • Trying to get the ball into a kiddie pool

This event promises to be a wonderful time for golfers and non-golfers alike.

Bring the family and arrive early or stay late to enjoy the unique attractions of Indian Wells, CA. In the local area there are homes that belonged to Frank Sinatra, Dean Martin, Zsa Zsa Gabor, Bing Crosby, and many more. The Historical Society and Museum of Palm Desert showcases the rich history of the local area and the celebrities who called it home. Additionally, take advantage of the opportunity to explore the natural beauty of the area while hiking along mountainsides and palm trees.

Immediately following the conference, an optional IT session is offered from noon on Wednesday, July 18 through noon, Thursday, July 19 at a separate fee.

INSIDE

- ◆ Late Reporting for 2017
- ◆ CRE Credits
- ◆ CDS Sponsorship Form Deadline
- ◆ State Chairs Update
- ◆ NAIC Handbook Training Schedule
- ◆ Veterans Benefits for SOFE Exam Fee Reimbursement
- ◆ Test Updates
- ◆ News from the Staff
- ◆ New Members and Designees
- ◆ Mark Your Calendar





LATE REPORTING FOR 2017:



MARCH 31, 2018
Credits are **DUE**

CRE Reporting for 2017 was due online by January 31, 2018. Late reports are accepted until March 31, via the Late CRE Reporting Form (on SOFE home page www.sofe.org), with the late filing fee. Failure to file the required credits is grounds for SOFE designation suspension. The minimum number of CREs an examiner must earn in any one year is 20, including 2 credits in ethics, and the NAIC Handbook Training (Financial or Analysis).

Please review the full details at the "Certification" tab at the top of the screen at www.sofe.org.

CRE AUDITS

All members with a designation have the possibility of being selected for an annual audit of the CRE credit they report. Annual audit selections of reported CRE credit for the year are as follows:

- A random selection of 5% of all designees' reporting
- One hundred percent (100%) of all questionable, late, or incomplete reporting
- The CRE credit reported by all new members of the Board of Governors is audited in their first year in office
- A random selection of 20% of the other Board members' CRE reporting for the year is audited.

Accredited and Certified members with questions about the audit may contact SOFE at sofe@sofe.org.

CDS SPONSORSHIP FORM DEADLINE

The Sponsorship Agreement form is due by **MARCH 2, 2018** for recognition in the SOFE 2018 CDS Registration Brochure, Final Program and Promotional materials. The details and Sponsor Agreement form for the 2018 CDS Sponsorship Program are linked on SOFE home page, www.sofe.org. Please contact Cindy Dodson 336-451-0553 with any questions.

DID YOU KNOW

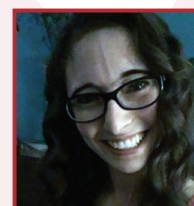
As a SOFE member you are able to list employment opportunities **FREE** of charge. Read more in the "Ad Policy" on the SOFE website in the Employment tab.

State Chair Updates

Please welcome our new state chairs **MATTHEW MILFORD**, CFE as the new state chair for Pennsylvania and **NATASHA ROBINSON** as new state chair for Utah.



Mr. Milford has been with the Pennsylvania Insurance Department, Bureau of Financial Examinations for the past 11 years conducting financial examinations of domestic insurers. He currently is an Examination Manager for the Department. Matthew also currently sits on the Board of Governors for SOFE.



Ms. Robinson has been with the Utah Insurance Department, Financial Examination Division for a year and a half. She currently participates in financial examinations of domestic insurers. She graduated from the University of Utah with a Bachelor's of Science in Accounting in 2015.

There are a few states with State Chair vacancies. If you would like to volunteer to be a State Chair for Arizona, Maryland, New Jersey, Wisconsin or the U.S. Virgin Island, please contact SOFE Headquarters.



NAIC Handbook Training Schedule

The 2018 NAIC handbook training webinar registration is open at http://www.naic.org/education_schedule.htm

Financial Analysis Solvency Tools (FAST) Enhancements

FEBRUARY 13

Financial Condition Examiners Handbook Updates & Hot Topics

FEBRUARY 15 and 20.

NAIC Handbook Training is a mandatory requirement for AFE, CFE and AES designations, so please make plans to attend one of these webinars.



SOCIETY OF FINANCIAL EXAMINERS

Site Search - Enter Keyword



Members Area | Robinx

Join SOFE

[ABOUT US](#) [MEMBERSHIP](#) [EDUCATION](#) [CERTIFICATION](#) [EMPLOYMENT](#) [RESOURCES](#) [CALENDAR](#) [CONTACT](#)

Calendar

[List View](#) | [Search Calendar](#)

< February 2018 >

Sun	Mon	Tue	Wed	Thu	Fri	Sat
				1 Suspension letters sent for non-payment of dues and delinquent CRE's	2	3
4	5	6	7 IAIR 2018 Insurance Resolution Workshop, Scottsdale, AZ	8 IAIR 2018 Insurance Resolution Workshop, Scottsdale, AZ	9 CDS - Call for Presentations Ends IAIR 2018 Insurance Resolution Workshop, Scottsdale, AZ	10
11	12	13 NAIC Financial Analysis Solvency Tools (FAST) Enhancements	14 Valentines Day	15 NAIC Financial Condition Examiners Handbook Updates & Hot Topics	16	17
18	19	20 NAIC Financial Condition Examiners Handbook Updates & Hot Topics	21 IRES MCM Course	22 IRES MCM Course	23 IRES MCM Course	24
25	26	27	28			



Veterans Benefits for SOFE Exam Fee Reimbursement

The Department of Veterans Affairs has approved under Section 122 of PL 106-416, SOFE's AFE and CFE exam fees for reimbursement retroactive to January 31, 2011. More information can be found on the SOFE Website at <https://www.sofe.org/testing/testing-information.html>. You must apply for VA benefits before using this form. The VA benefits application forms links are found on the SOFE website. Questions about eligibility or filing must be directed to the Veterans Administration. Information assistance on the GI Bill under which this funding is provided at the VA website. Forms must be submitted to the VA address provided in the form instructions. DO NOT SUBMIT FORMS TO SOFE.

Test Updates

The examination committee has been working to update several tests. The following tests will be replaced by new test banks in 2018.

CFE4

The committee has received the new test bank from the test writer and are working to make it available in March. The old test will be deactivated 30 days after the new test is posted.

CFE1

The committee is expected to receive the revised test soon and the goal is to make it available in March.

AFE2

The test bank is being revised and based on the new edition of the book which is available from Actuarial Bookstore. The new test is expected to be available March 1 and the old test deactivated on April 30.

CFE3

SOFE is revising the test and the new updated test will be in 2018 summer. The new test will be based on new textbooks.

NEWS FROM THE STAFF

January is over and we are past the deadlines for membership renewal for 2018 and 2017 CRE credit submissions. We are busy planning for CRE Audits, new exams and CDS.

We appreciate all your kinds words and would like to share our favorites below. We enjoy working with you and look forward to meeting you at CDS in July.

Robin and Rhenda:

"I really have to complement you on the frequent reminders/follow-ups on CRE, etc. These are a big help. Light years ahead of the previous admin." Regards, Glenn

"Thanks, much appreciated. I have been super impressed with the customer service you provided this year since the new management took over. It is in my opinion, great. Thank you for everything and making our organization a really great organization." Steve

"Thank you for your prompt response!" David

"Thanks for the call. You ladies are a delight!" Laura

SOFE Headquarters

3505 Vernon Woods Drive,
Summerfield, NC 27358.

Our hours of operation are
Monday-Friday 8:30am to
5:00pm EST.

Phone No. 336-365-4640



New Members and Designees

Welcome to the new SOFE members who were approved by the Executive Committee since our last publication of InSIGHT:

Welcome New Members!

GENERAL MEMBERS

Rochelle Atkins, IN
Rebecca Aitchison, VT
Andrew Brunnert, MO
Donna Cavitt Clark, IL
Dawn Cormier, CT
Natahn Faragher, ID
Erin Gaddis, MA
Gerald Hew, HI
Joe Jacobson, NE
Koffi Klu, MD
Thomas Leong, IL
Eleanor Lu, WI
Khoa Nguyen, OR
Misal Panchal, CT
Josh Pietan, IA
Barbara Remmer, IL
Daniel Schnepf, IN
Daniel Schoettle, IN
James Sklencar, PA
Rita Summerlin, AL
Sharlea Taft, NV
Trissa Teel, NC
Frank Wsol, IL

Congratulations to the following members who were granted SOFE designations by the Executive Committee since our last publication of InSIGHT:

Congratulations to our New Designees!

CFE DESIGNEEES

Thomas Adema, MI
David McElroy, TX
Taylor Phillips, MS
Kari Leonard, MT

AFE DESIGNEEES

James Carpino, PA
Natalie Henley, TN
Taylor Phillips, MS
Natasha Bowland, NC
Kenna Schievelbein, TX
Wallace Richard Thomas, AK
Kenson Tang, MO
Ryan Martin, MS

AES DESIGNEE

Dai How Bih, NY



Website Question

Q After I enter my CRE record on the SOFE website, I see a **RED X**. What does that mean?

A The **RED X** is a new feature that allows you to delete a record. If you make a mistake while entering a record, you don't have to contact SOFE headquarters to make a correction. You can use the **RED X** to delete the record and then enter it again correctly.

107588	2017 08/15/2017 09:25:45 PM	08/15/2017 #test test Provider: Actuarial Group Inc. (AGI Services)	Ethics N	1.0
X				



Mark Your Calendars Upcoming SOFE Career Development Seminars

Details as they are available at: www.sofe.org



2018 July 15–18
Indian Wells, California
Hyatt Regency Indian Wells



2019 July 21–24
Memphis, Tennessee
The Peabody Memphis



2020 July 19–22
Orlando, Florida
Walt Disney World Swan Hotel



2021 July 18–21
Scottsdale, AZ
Westin Kierland



Examiner[®]

Authors Wanted

The Publications Committee is looking for members to write articles for the quarterly *Examiner* magazine. **Authors will receive six Continuing Regulatory Credits (CRE) for each technical article selected for publication.**

Interested authors should contact the Publications Committee Chair, **Tian Xiao**, via sofe@sofe.org