



# SOFE

## Society of Financial Examiners

# INSIGHT

AUGUST / SEPTEMBER / OCTOBER 2022

Volume 51 • ISSUE 3



## The **PRESIDENT'S** Corner

My name is **Eli Snowbarger**, and it is my honor to serve as your 2022 – 2023 SOFE president. I am very grateful for this opportunity, and I look forward to the upcoming year. SOFE is a not-for-profit professional Society, and we would not be what we are today without the significant and substantive volunteerism practiced by you. I am very grateful for all the hard work contributed by our membership, including our Board of Governors, Executive Committee, and all the volunteers that contribute to the sub-committees which support and feed into our Executive Committee. Serving SOFE in various volunteer roles over the past ten years has been a privilege and a blessing personally and professionally. I have gained a lot of diverse friends across the Nation as well as an increased amount of professional opportunity. As a result, I want to encourage everyone to volunteer for a SOFE committee. I include some Information below on how to volunteer.

Before discussing how to get involved I want to highlight SOFEs focus during our upcoming year. We have a lot of exciting things to look forward to. Over the years we have continued to grow in partnership with the NAIC in providing collaborative education resources for existing and prospective financial examiners and analysts. We are dedicated to advancing this partnership throughout the year and beyond. Additionally, the SOFE examination committee has identified a few university professors to continue to work on keeping our tests up-to-date and current. Throughout this year the examinations committee will be reviewing and approving new test questions submitted by our contract test writers. The most exciting thing we are already looking forward to is next year's CDS and its extended AES IT session. Next year's CDS is scheduled to occur on July 16th through the 19th at the Omni Hotel in Louisville, KY. It will be exciting to see everyone again in a city known for Horse racing, Bourbon, and Sluggers. I am already excited to see what the CDS committee, led by Lindsay Crawford and Ryan Havick, come up with for next year's CDS Social. We can't talk about CDS without also discussing the opportunity to participate in the AES IT special session which occurs the afternoon of Wednesday July 19th and the morning of Thursday July 20th immediately following the CDS. The AES is a critically important IT designation for financial solvency across the nation. I am very grateful to Jenny Jeffers and her AES committee for organizing this extended session and encourage everyone to spread the word about this session and designation to their IT colleagues.

I am very thankful for the hard work and professionalism of the SOFE management team provided by Meeting Services, Inc. This team includes Cindy Dodson, Rhenda Davis, and Katie Hess. They have so often gone above and beyond in the services they provide.

*(Continued on page 5)*

## INSIDE

- ◆ CDS Committee
- ◆ 2022 CDS Sponsors
- ◆ SOFE 2022 CDS Award Winners
- ◆ 2022 CDS Recap
- ◆ Board of Governors & Executive Committee
- ◆ Sunday Social Recap
- ◆ SOFE CDS Charity
- ◆ Outgoing President's Message
- ◆ SOFE Important Reminders
- ◆ State Chairs and State Chair Vacancies
- ◆ Publications Committee Corner
- ◆ New Members and Designees
- ◆ MSI Staff
- ◆ Sponsors
- ◆ In Memoriam  
Charles Ivan Nicoloff
- ◆ Mark Your Calendar
- ◆ Authors Wanted



## CDS Committee

**Ryan Havick**, CFE | Co-chair

**Lindsay Crawford**, CFE | Co-chair

**Jenny Jeffers**, AES | Co-chair

Jessie Adamson, CFE

TJ Adamson, CFE

Anjanette Briggs, CFE

Lori Brock, CFE

Vivien Fan, CFE

Shannon Hopkins, CFE

Glenn LeGault, CFE

Brian Menard, CFE

Bill Michael, CFE

Liz Nielson, CFE

Dan Petterson, CFE

Robin Roberts, CFE

Kristen Sharrow, CFE

Alea Talbert-Pence, CFE

## 2022 CDS Sponsors

### PLATINUM

Baker Tilly, LLP

Eide Bailly LLP

Examination Resources, LLC

Johnson Lambert LLP

Noble Consulting Services, Inc.

Risk & Regulatory Consulting, LLC

The INS Companies

### GOLD

Carr, Riggs & Ingram, LLC

### SILVER

Lewis & Ellis

Merlinos & Associates, Inc.

### AES SESSION SPONSORS

Eide Bailly LLP

Johnson Lambert LLP

Risk & Regulatory Consulting, LLC

*Thank You*

A special thank you goes out to our sponsors for the generous support they have provided for the 2022 CDS Conference. Your sponsorship helps to make this possible each year.

## SOFE 2022 CDS Award Recipients



### Editor's Choice Award

**SARA SCHUMACHER** received the *Editor's Choice Award* for her contributions to the Society publications during the past year. Sara was selected by her peers on the Publications Committee. She co-authored an article for the Summer 2021 edition of *The Examiner* and authored an article for the Spring 2022 edition of *The Examiner*. Sara has served on the Publications Committee since 2019.



### Don Fritz Award

**JEFF MAHER**, CFE, CPA, APIR was presented the *Don Fritz Award* for his outstanding service as State Chair of the State of Arkansas. Jeff has served as Arkansas State Chair since 2020.

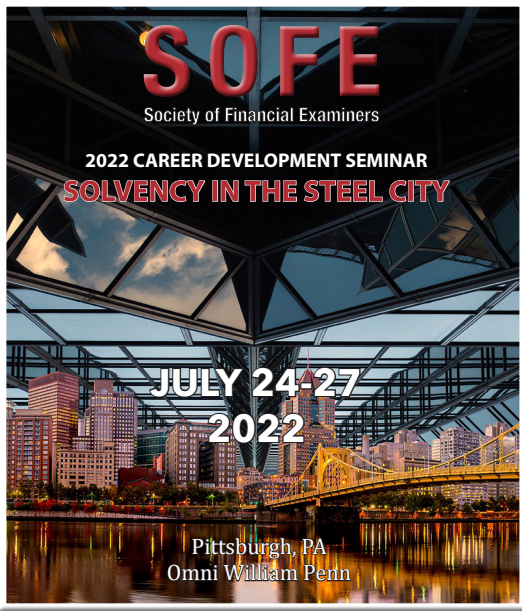


### Founders Award

**LAURA CLEMENTS AND DOUG SLAPE** were each presented the *Founders Award* in recognition of their dedication and contributions to SOFE. Doug served on the SOFE Board of Governors for over 20 years before resigning after the 2022 CDS. Laura was instrumental in providing the Free Training Day to our Members in December of 2021.

### William McCune Award (Not Pictured)

**ANDREW GUERRERO** received the *William McCune Award* for excellence in the SOFE Certified Financial Examiner test series in 2021. Andrew was with the Texas Department of Insurance until just before CDS.



## 2022 CDS Recap

- Over 450 participants, both members and non-members of SOFE.
- 14 scholarships were awarded to state employees to attend the CDS.
- **Thank you to the Financial Examiners Education Foundation (FEEF)** for partnering with SOFE to provide these scholarships!
- 75 Speakers shared their industry knowledge and expertise.
- 56 Sessions were available for members to attend.
- The IT Extended Session made its return with over 30 attendees for an additional 8 IT credits.
- 23 Continuing education credits were available to each attendee during the CDS.
- Attendees traveled back to the 1920's for dinner, drinks and a jazz band. The Social had a great turnout, thank you to all who participated in the costume contest!

## Board of Governors and Executive Committee



### Newly Elected Board of Governors

Glenn LeGault  
Jop Bunyasrie  
William Michael

### Re-elected Board of Governors

Adam Jackson  
Annette Knief  
Jim Kattman  
Justin Schrader  
Mark Murphy  
Ryan Havick

### Retired Board of Governors

Michael Morrissey  
Matthew Milford  
Sean O'Donnell  
Robin Brown

## Executive Committee



### Newly Elected Executive Committee

Monique Smith

### Re-elected Executive Committee

Barry Armstrong  
Shawn Frederick  
Bill O'Connell  
Joanne Smith  
Richard Foster  
Robin Roberts

### Retired Executive Committee

Joanne Campanelli • We would like to express our appreciation for 10 years Joanne served on the committee.

### SOFE Officers

President • Eli Snowbarger, CFE  
President Elect • Joanne Smith, CFE  
Treasurer • Lindsay Crawford, CFE  
Past President • Tarik Subbagh, CFE  
Secretary • Bill O'Connell, CFE



## Sunday Social Recap

Thank you to all of those who participated in the 1920's costume contest! It was a roaring time with you all! Congratulations to the winners of the costume contest pictured below.



L to R: Patrick Zeller, Natalie Cunningham, Mary Alison Schleit, Chase Davis, Jean Adams-Harris





## SOFE CDS Charity

**412 FOOD RESCUE** was selected as the Charity for the 2022 CDS. The Charity redirects perfectly good food to those experiencing food insecurity in the Pittsburgh area. 412 Food Rescue was founded as a direct response to the disconnect between food waste, hunger and environmental sustainability. The Environmental Protection Agency estimates more than 97% of food waste generated ends up in a landfill, generating a large portion of U.S. methane emissions.

412 Food Rescue partners with food retailers, volunteer drivers and non-profit organizations to connect surplus food with those experiencing food insecurity. Volunteers rescue perfectly good but unsellable food that would otherwise be wasted and redirect it to people in need. Approximately 87% of the food rescued is fresh food; primarily produce, meat, dairy and bread. The Charity also creates meals from surplus food, equips people with better cooking skills, creates innovative products from food waste, and distributes "unsellable" produce in a CSA program.

For more information or to donate you can visit <https://412foodrescue.org/about-us/>



*(President's Message Continued from page 1)*

Finally, I would also like to thank my immediate predecessors Tarik Subbagh and Joanne Campanelli for their years of volunteer work and leadership.

### How to get involved!

Currently, we're forming the Committees for the 2022-2023 year. I hope you will consider this opportunity to volunteer and assist SOFE in providing first class service to our membership (**See detailed info on page 6**). We want to hear your ideas and to invite you to participate in shaping SOFE's future. If you would like to directly communicate with me via email, my e-mail address is [elisnowbarger@gmail.com](mailto:elisnowbarger@gmail.com). Thank you all again for the opportunity to serve as your President. I am looking forward to seeing you all during the 2023 CDS in Louisville, KY.

*Eli Snowbarger, CFE  
SOFE President*

## Outgoing President's Message

A final note from my tenure as SOFE President and as I transition to the role of SOFE Past President. In many ways, the last twelve months were an extension of the ongoing challenges we faced since the first days of the pandemic in 2020. The pandemic and its new variants refused to go away. Fatigue and weariness continued to add challenges to the Society and our members. COVID, including canceling CDS in 2020 and 2021, caused financial pressures, increased service demands, and virtual vs. in-person dilemmas that were as persistent as the virus itself.

As I assumed my new role as SOFE Past President, I notice that our Society has never been more relevant and important. I've come to think of the Society as the best means of enabling us to teach, share knowledge, advocate, meet, network, and socialize with colleagues all over the country.

*The question is, where do I go from here?*

For the next twelve months, I'll continue serving on the Executive Committee, assist the president with committees, Chair the Professional Standards Committee, mentor new board members, and more importantly advise the president and other officers and members of the board of directors regarding past practices, general operations, and other matters to assist in the smooth operation of the Society.

Serving SOFE in various capacities allowed me to gain quality friends and acquaintances that I have made in the last ten plus years. As everyone should be aware at this point, I sincerely enjoyed my time with SOFE, the management team, officers, and members at large. I thank you all from the bottom of my heart. I am so happy to know that, given the talent in our membership, the future of SOFE looks positive for many years to come and I am proud to say that I played a role in the success of our Society. Even after my term on the Executive Committee ends in July 2023, I plan on staying active and to continue to serve on committees such as the Membership and Examinations Committee.

I wish the new president, Eli Snowbarger, new officers of SOFE, and the entire membership the best of luck and continued success. Please remember that the success of the Society relies on everyone's participation whether you are a board member, officer, or voting member, it all contributes to the Society's success.



# SOFE Important Reminders

## UPCOMING CRE OPPORTUNITIES

The SOFE Education Committee is committed to providing continuing education opportunities to members. Do you still need CRE credits for 2022? Virtual Mini-CDS sessions are scheduled for September 15 and 29 from 1:00 PM to 5:00 PM EST. Earn up to 8 CRE credits. Training is available to all SOFE Members at no charge. Registration information will be provided in the near future.

## COMMITTEE VOLUNTEERS INVITED



The 2022-23 Leadership Team invites qualified SOFE members to serve on SOFE Committees. This is your opportunity to invest your time and insight to ensure the continued success of your professional society. No travel is required as most of the work is done via email and teleconference. Please contact the Vice President chairing the committee or **Katie Hess** ([katie@sofe.org](mailto:katie@sofe.org)) to express your desire to volunteer for your committee of choice. Volunteers can select one or more committees. The SOFE Committee Vice President will determine which volunteers will serve on their committee, based on the number of volunteers needed.

SOFE sent out information on volunteering for SOFE's various committees in August.

Committee	Committee Chair/Co-chairs	Contact Information
AES	Jenny Jeffers, AES	<a href="mailto:jenny@jennan.com">jenny@jennan.com</a>
CDS	Ryan Havick, CFE Lindsay Crawford, CFE	<a href="mailto:rhavick@eidebailly.com">rhavick@eidebailly.com</a> <a href="mailto:lindsay.crawford@nebraska.gov">lindsay.crawford@nebraska.gov</a>
Education	Barry Armstrong, CFE Monique Smith	<a href="mailto:barmstrong@noblecon.net">barmstrong@noblecon.net</a> <a href="mailto:Monique.smith@ncdoi.gov">Monique.smith@ncdoi.gov</a>
Examinations	Bill O'Connell, CFE Bryant Cummings, CFE	<a href="mailto:boconnell@noblecon.net">boconnell@noblecon.net</a> <a href="mailto:Bryant.cummings@tn.gov">Bryant.cummings@tn.gov</a>
Future Sites	Ryan Havick, CFE	<a href="mailto:rhavick@eidebailly.com">rhavick@eidebailly.com</a>
Membership	Chase Davis, CFE	<a href="mailto:chasedavis@examresources.net">chasedavis@examresources.net</a>
Nominations	Malis Rasmussen, CFE Richard Foster, CFE	<a href="mailto:marasmussen@utah.gov">marasmussen@utah.gov</a> <a href="mailto:rfoster@theinscompanies.com">rfoster@theinscompanies.com</a>
Professional Standards	Tarik Subbagh, CFE	<a href="mailto:Tarik.subbagh@oic.wa.gov">Tarik.subbagh@oic.wa.gov</a>
Publications	Robin Roberts, CFE Shawn Frederick, CFE	<a href="mailto:rroberts@eidebailly.com">rroberts@eidebailly.com</a> <a href="mailto:Shawn.frederick@tdi.texas.gov">Shawn.frederick@tdi.texas.gov</a>

## State Chairs

- |   |   |  |  |   |
|---|---|--|--|---|
| <b>ALABAMA</b><br>Toni L. Bean, CFE                         | <b>GEORGIA</b><br>Mark Ossi, CFE, CPA,<br>AMCM, CFE (Fraud) | <b>MASSACHUSETTS</b><br>John M. Curran, CFE    | <b>NEW YORK</b><br>James Matheson, CFE         | <b>TENNESSEE</b><br>Bryant Cummings, CFE          |
| <b>ARIZONA</b><br>Scott Kalna, CFE, AMCM                    | <b>IDAHO</b><br>Jessie L. Adamson, CFE                      | <b>MICHIGAN</b><br>Tim Defever, CFE            | <b>NORTH CAROLINA</b><br>Monique D. Smith, CFE | <b>TEXAS</b><br>Amy Garcia, CFE                   |
| <b>ARKANSAS</b><br>Jeff Maher, CFE, CPA, APIR               | <b>ILLINOIS</b><br>Casey Shaw, CFE                          | <b>MISSISSIPPI</b><br>David Browning, CFE      | <b>NORTH DAKOTA</b><br>Matt Fischer, CFE       | <b>UTAH</b><br>Cambria Shore                      |
| <b>CALIFORNIA</b><br>Susan Bernard, AES, CFE                | <b>INDIANA</b><br>Connie Moody, CFE, CPA                    | <b>MISSOURI</b><br>Michael R. Shadowens<br>CFE | <b>OHIO</b><br>Tracy Snow, CFE                 | <b>VERMONT</b><br>Stacey E. Alden, CPA,<br>CFE    |
| <b>COLORADO</b><br>Keith Warburton<br>CPA, CPCU, CFE        | <b>IOWA</b><br>Bob Wong, CFE, CISA                          | <b>MONTANA</b><br>Kari Leonard, CFE            | <b>OKLAHOMA</b><br>Eli A. Snowbarger, CFE      | <b>VIRGINIA</b><br>Mario A. Cuellar, CFE          |
| <b>CONNECTICUT</b><br>Chiffon King, AFE                     | <b>KANSAS</b><br>Levi Nwasoria, CFE, CFE                    | <b>NEBRASKA</b><br>Lindsay Crawford, CFE       | <b>OREGON</b><br>Scott Meyer                   | <b>WASHINGTON</b><br>Tarik M. Subbagh<br>CPA, CFE |
| <b>DC</b><br>Jop Buyasrie                                   | <b>KENTUCKY</b><br>Jeff Gaither                             | <b>NEVADA</b><br>Kelsey Barlow, CFE            | <b>PENNSYLVANIA</b><br>Matthew Milford, CFE    | <b>WEST VIRGINIA</b><br>Jamie O. Taylor, CFE      |
| <b>DELAWARE</b><br>Steven Carlson, CFE, APRI                | <b>LOUISIANA</b><br>Stuart Guerin, CFE                      | <b>NEW HAMPSHIRE</b><br>Colin Wilkins, CFE     | <b>RHODE ISLAND</b><br>Nicholas Illuzzi, AFE   | <b>WISCONSIN</b><br>Karl Albert, CFE              |
| <b>FLORIDA</b><br>Margaret "Peggy" McCrary<br>CFE, CPA, MBA | <b>MAINE</b><br>Laurelyn S. Cooper, CFE                     | <b>NEW JERSEY</b><br>Lewis Bivona              | <b>SOUTH CAROLINA</b><br>Neal Foster, CFE      | <b>WYOMING</b><br>Doug Melvin, CFE                |
|   | <b>MARYLAND</b><br>Dmitriy Valekha, CFE, CPA                | <b>NEW MEXICO</b><br>Lea Geckler               |  |   |

## State Chair Vacancies

- ALASKA
- HAWAII
- MINNESOTA
- U.S. VIRGIN ISLANDS

If you would like to volunteer to be a State Chair, please contact SOFE Headquarters.



# Publications Committee Corner

## What does the Publications Committee do?

- Responsible for The Examiner professional magazine. The Examiner publication is published 3 times a year with articles on financial examination, financial analysis, IT review and other insurance industry topics. The Examiner is posted to the member's only section of the SOFE Website at <https://www.sofe.org/members-only/sofe-examiner.html>.
- Responsible for the InSIGHT newsletter. The InSIGHT is published quarterly and highlights current events at SOFE such as upcoming continuing education opportunities, reminders to SOFE membership, and announcements of new SOFE members and designees. The InSIGHT is posted to the member's only section of the SOFE website at <https://www.sofe.org/members-only/sofe-insight.html>.
- Responsible for establishing a Publications Schedule each year. The current SOFE Publications Schedule is posted to the SOFE Website at <https://www.sofe.org/resources/publications.html>
- Responsible for seeking professional, technical and informative articles for publication in The Examiner.
- Responsible for attending regular scheduled Publications Committee conference calls to discuss and approve articles for publication in The Examiner. Alternatively, email participation is acceptable if unable to participate on the calls.
- Responsible for proofreading draft versions of The Examiner and InSIGHT prior to publication.
- Responsible for writing/reviewing and proofreading CRE Reading Quiz questions for each article published in The Examiner. *What is the CRE Reading Quiz?*
- An opportunity for FREE continuing regulatory education (CRE) credits!
- A quick quiz with multiple choice or True/False questions for each article published in The Examiner.
- SOFE Members can earn two (2) CRE credits for each quiz with a passing grade of 70%, and an opportunity for a total of six (6) CRE credits each calendar year.
- Easy and free online testing on SOFE Testing Website. *Why should I write an article for The Examiner?*
- Authors earn six (6) continuing regulatory education (CRE) credits for each article published.
- Authors are recognized for insurance expertise by their entire SOFE membership. For example, an article published in The Examiner is a great opportunity for SOFE CDS session presenters to highlight upcoming session topics to all SOFE membership.

Articles are typically 2500-4000 words and/or 3-6 pages in length submitted in MS Word format and submitted with a current, one paragraph biography for each author, completed release form signed by each author and any accompanying photos or charts in high-resolution format. Fillable release forms for original articles are available at [https://www.sofe.org/resources/SOFE\\_Author\\_Release\\_Form\\_Fillable.pdf](https://www.sofe.org/resources/SOFE_Author_Release_Form_Fillable.pdf)

Articles may also be reprints of the author's previous publications. In this case, a reprint release form would also need to be completed. The fillable form is available at [https://www.sofe.org/resources/SOFE\\_Publisher\\_Reprint\\_Release\\_Form\\_Fillable.pdf](https://www.sofe.org/resources/SOFE_Publisher_Reprint_Release_Form_Fillable.pdf)

- Deadlines to submit articles for publication in the 2022-2023 issues are September 16, 2022, January 20, 2023 and April 28, 2023. Please submit articles to [sofe@sofe.org](mailto:sofe@sofe.org) and to [roberts@eidebailly.com](mailto:roberts@eidebailly.com) for consideration by the Publications Committee.

### 2022-23 Publications Committee Members

The SOFE Publications Committee is currently composed of a group of 7 regulators and 13 contractors/consultants. Committee members must be general, accredited or certified members of SOFE in good standing.

**Shawn Frederick and Robin Roberts** serve as committee co-chairs.

April Spevak	Darin Benck
Clarissa Crisp	Fenhua Liu
Dan Judge	Fred Karlinsky
Dan Petterson	Glenn LeGault
Joanne Smith	Matthew Jones
Laura Clark	Neal Foster
Leane Rafalko	Philip Talerico
Lewis Binova	Sara Schumacher
Sean O'Donnell	Timothy Stanfield



## New Members and Designees

*Welcome to the new SOFE members who were approved by the Executive Committee since our last publication of InSIGHT:*

### Welcome New Members!

#### GENERAL MEMBERS

Marsha Grice Bell, IN  
Jeremy Blocker, NE  
Adrienne Lewis, PA  
Jonathan Munneke, GA  
Laura O'Connor, KY  
Tyler Rosenlof, NE  
Fatima Salazar, NE  
Erin Snyder, MT  
Russ Sommers, PA  
Aiden Urban, UT  
Ling Wang, CA

*Congratulations to the following members who were granted SOFE designations by the Executive Committee since our last publication of InSIGHT:*

### Congratulations to our New Designees!

#### AFE DESIGNEES

Sarah Fugate (TX)

#### CFE DESIGNEES

Jeffrey Myer, TX  
Connor Nilges, MO



## MSI STAFF



### **Cindy Dodson, Executive Director**

Overall management supervision. Direct responsibility and communication with Executive committee. Reviews entries and financials with the Accounting Manager as the first level of checks and balances. Contract management.

### **Katie Hess, Assistant Executive Director**

Direct communication with Executive Committee. Reviews database information with Membership Director and performs random checks on data. Schedules and attends teleconferences, and board and committee meetings. Attends NAIC functions as a representative of SOFE. Examination administration and oversight of testing function.

### **Rhenda Davis, Membership Director**

Overall management of membership, renewal, and packet distribution. Management of Membership Committee calls, organization, follow up, and documentation. Direct contact for membership regarding questions and information. Examination administration and oversight of testing function with testing site. Attends NAIC functions as a representative of SOFE.

### **Debbie Wilborn**

Manages CDS Registration and reporting.





# PLATINUM

SPONSORS



## CDS Scholarships and FEEF

*SOFE kindly thanks FEEF for providing the Morty Mann Scholarship to 14 SOFE Members for the 2022 CDS.*



### *In Memoriam Charles Ivan Nicoloff*

Charles Ivan Nicoloff peacefully passed away at home on August 14, 2022. Charlie spent his career in finance and insurance working for both the State of California and the State of Oregon. He retired from his position as Deputy Administrator with the Department of Consumer and Business Services in 2002. He was a member of the Society of Financial Examiners and served on the Board of Governors for more than 10 years.



# Mark Your Calendar

## Upcoming SOFE Career Development Seminars

Details as they are available at: [www.sofe.org](http://www.sofe.org)

**2023 July 16-19**

Louisville, KY  
Omni Louisville



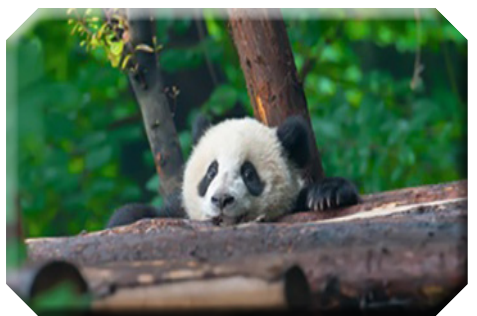
**2024 July 28-  
August 1**

Oklahoma City, OK  
Omni Oklahoma City Hotel



**2025 July 19-22**

San Diego, CA  
Omni San Diego Hotel



## Authors Wanted



**Examiner**<sup>®</sup>

2022 Fall Examiner

**September 16, 2022**

2023 Spring Examiner

**January 20, 2023**

The Publications Committee is seeking members and non-members to write articles for upcoming editions of The Examiner professional magazine. Suggested articles include current topics relevant to the insurance industry, ERM, ORSA, statutory accounting, risk-focused financial examinations and financial analysis procedures, IT general control reviews, prospective risks, fraud risks, examiner soft skills and best practices. CDS or other conference presentations are prime examples of information that can be turned into articles. Professional contacts in the insurance industry are also great resources for articles.

Contributing an article is a great way to showcase your expertise in the insurance regulatory community and to receive six (6) Continuing Regulatory Education (CRE) credits for each technical article selected for publication. Interested authors should contact the **Publications Committee co-chairs at [rroberts@eidebailly.com](mailto:rroberts@eidebailly.com), [shawn.frederick@tdi.texas.gov](mailto:shawn.frederick@tdi.texas.gov), and/or [sofe@sofe.org](mailto:sofe@sofe.org).**

### SOFE Headquarters

3505 Vernon Woods Drive, Summerfield, NC 27358.

Our hours of operation are Monday-Friday 8:30am to 5:00pm EST.

**Phone No. 336-365-4640**